

BizInt Smart Charts

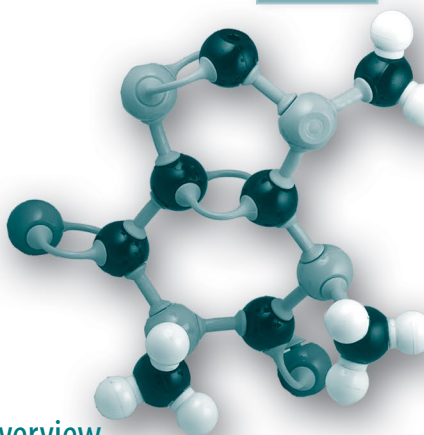
for Patents

VERSION

5.8

Mini Guide

BizInt Smart Charts for Patents helps you create, customize and distribute tabular reports integrating data from the leading patents, IP sequence, and non-patent literature databases.



Using BizInt Smart Charts for Patents – Overview

Use this Mini Guide (revised for Version 5.8) to learn about the key features for creating, customizing and distributing your integrated IP report.

Creating your integrated report

- Import your search results and save your .chp file ([see page 2](#))
- Combine charts and identify related patents and publications ([see page 3](#))
- Summarize related records into a single row in your final exported report ([see page 4](#))
- Change database rankings and column rules, override the rules, and create summary tables ([see page 8](#))

Reviewing your report

- View charts, records and images ([see page 5](#))
- Change the visible columns ([see page 5](#))

Customizing your report

- Hide & move rows, add columns, sort, edit text, change truncation, create and apply chart templates, generate statistics and color-code cells ([see page 6](#))

Distributing your report

- Use **File | Export** to distribute reports in HTML, Word, and Excel, including hit structure reports using the Word - Summary Records export ([see page 11](#))
- Update reports and identify new and changed information ([see page 10](#))
- Create links to full-text patents and other publications ([see page 12](#))

Spend a few minutes with this Mini Guide to understand the key features of BizInt Smart Charts for Patents. You can use the sample files located in the **tour** directory to try many of these features.

Importing data to create a report

The first step in creating your BizInt Smart Charts report is to import the results of your patent, IP sequence, or literature search.

Information about the currently supported databases and platforms can be found at [Creating Reports from Databases and Hosts](#) on the Support section of our website. We recommend reviewing this information before exporting search results from a database for the first time, and testing your export format by displaying and importing just a few records.

Support

About Support

Creating Reports from
Databases and Hosts

Tips for Using BizInt
Smart Charts

Installation and IT
Issues

Subscribe to Release
Announcements

Importing your search results

Most supported databases offer a BizInt export. If it doesn't open in BizInt Smart Charts automatically, double-click on the downloaded file to start creating your report.

Using File | Import

If you are importing non-BizInt export files (e.g. rtf from STNext) or if BizInt Smart Charts is not automatically invoked when you export your search results, select **File | Import**—not **File | Open**—from the menu bar.

From the Import window, find and select the file with your exported search results.

A panel will appear showing the number of records in the file. When you create a chart from multiple databases it is treated as a combined chart ([see page 3.](#))

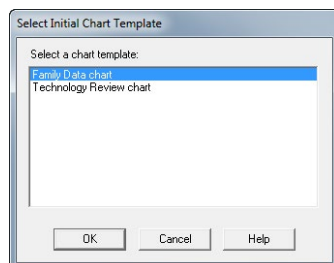
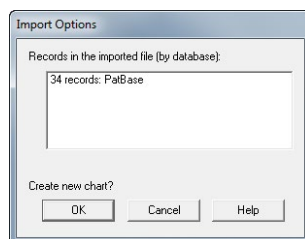
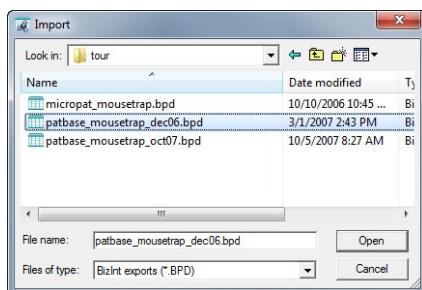
Applying a chart template

After clicking OK you will be asked to select a chart template. Chart templates define the initial presentation of the report including visible columns. You can change visible columns later, apply a different template, and even create your own templates ([see page 7.](#))

Saving your report

Use **File | Save** to save your report as a .chp file.

Note: Export your report if you want to view it in other applications ([see page 11.](#))



BizInt Smart Charts for Patents Version 5 is compatible with Windows 7, Windows 8, and Windows 10.

Combining charts

Use **File | Combine** to combine charts from different patent and IP sequence databases and sources into a single chart.

In Step 1, choose the key chart from the list of all open chart files. In Step 2, choose the additional charts to combine.

In Step 3, edit the new chart title and select your combine option (usually the first option.) Select "Finish" to create your combined chart.

Each visible (not hidden) row in the original charts will appear in the combined chart. The Database column indicates the source of each record. Columns with similar content are aligned.

Create Combined Chart Wizard

Step 1 - Select the Key Chart

This wizard helps you create a chart combining data from different charts. Use File | Update if you wish to update a chart with new information.

In Step 1, you select the "Key Chart". The Key Chart is used to define the initial presentation of the combined chart.

In Step 2, you select the remaining charts that you wish to combine with the Key Chart.

In Step 3, you enter the title of the new combined chart and select options for the combine chart behavior.

Next > Cancel Help

Step 3 - Select options for new combined chart:

Enter new chart title: [Mousetrap Patents (WPI, PatBase, MicroPatent)]

Select the operation you would like to perform:

- ☒ **Combine charts from different databases.**
Build a report from different sources, aligning common fields.
- ☐ **Add additional results from same search.**
Create one report from results saved in several files.
- ☐ **Merge results from different search strategies.**
Use the Row Status column to see differences in results.
- ☐ **Combine without removing duplicates.**
Useful for gene sequence charts from multiple queries.

Advanced... Finish < Back Cancel Help

Identifying related records

When you combine reports, the **Common Patent Family** column is now automatically created. *There is currently no similar tool for non-patent literature.*

The **Identify Common Patent Families** tool examines publication numbers and creates a new Common Family column with a single patent number key for each set of related publications.

Sort Related Records in Chart

To group related records together in your report, use the **View | Sort** command on the Common Family column, and check the box for "Alternate row shading when primary sort key changes".

D:\Export\PatentData\mousetrap\Mousetrap_Combined_MG.chp

Combined: Better Mousetraps - WPI, MicroPatent, PatBase

	Title	Common Family	Database	Patent Family		
				Patent	Kind	Date
62	TRAP; PIECE	WVO 03063588	PatBase	WO 03063588	A1	2003-08-07
				SE 525641	C2	2005-03-29
				SE 200200229	A	2003-07-29
				WO 03063588	C2	2004-04-22
63	TESTING A PIPELINE IN AN IC	WVO 06008132	PatBase	WO 06008132	A1	2006-01-19
64	Mousetrap	WVO 2005051079	PatBase	AU 2004292376	AA	2005-06-09
				BR 200416076	A	2007-01-02
				EP 1691603	A1	2006-08-23
				GB 200325446	A0	2003-12-03
				KR 2006110287	A	2006-10-24
				US 2007017149	A	2007-01-25
				WO 05051079	A1	2005-06-09
65	Mouse trap used at home has enclosure which is provided with top and base having aperture and indentation that can be aligned to open enclosure for entry of mouse, such that contra-rotation of top relative to base is enabled to trap moose.	WVO 2005051079	Derwent/World Patents Index	WO 2005051079	A1	20050609
				EP 1691603	A1	20060823
66	TRAP FOR ANIMALS	WVO 2005099451	MicroPatent	WO 2005099451	A1	2005-10-27
				SE 0400959	A	

Sort Rows

Columns:

- Abstract
- Abstract (French)
- Accession Number
- Agent
- Author(s)
- CA Classification
- Claims
- CPC
- Database
- Dates
- Document Number
- Document Type
- DOI
- ECLA Class
- Entry Date
- Full Text Link
- Ht Registry Numbers
- Index Terms
- International Patent Class

Add >> Remove Ascending

Sort Order:

Common Family

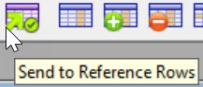
Sort Cancel Help...

☒ Alternate row shading when primary sort key changes

Creating your Reference Rows report

In Reference Rows, records for each set of related publications are integrated into a single Reference Row in your exported report.

- 1. From your combined chart, select File | Send to Reference Rows.
Starting with Version 5.6, you do not need to save your .chp file.



Reference Rows “Selection View”

Reference Rows opens showing the Selection View (see below) of the combined chart. The Common Patent Family column will be automatically created.

	Title	Database	Patent Family Status				Probable Assignee	Abstract
			Patent	Kind	Status	Status Date		
1 a	Process to improve crop yield by application of natamycin	Chemical Abstracts	WO 2018011046	A1	Dead	20210311	ROYAL DSM NV	The present invention relates to a process to improve the yield of strawberry crops, the process comprising the steps of applying a polyene antifungal agent, esp. natamycin, to the roots of a strawberry plant prior to planting said plant and/or to the medium to which the plant is to be planted. The claimed process results in an increased no. of crops, an increase in the wt. [CONT.]
			EP 3484292	A1	Dead	20201201		Source: US2018307119
			US 20190307119	A1	Alive	20201120		The present invention relates to a process to improve the yield of strawberry crops, the process comprising the steps of applying a polyene antifungal agent, especially natamycin, to the roots of a strawberry plant prior to planting said plant and/or to the medium to which the plant is to be planted. [CONT.]
1 b	PROCESS TO IMPROVE CROP YIELD	PatBase					ROYAL DSM NV	The present invention relates to a process to improve the yield of strawberry crops, the process comprising the steps of applying a polyene antifungal agent, especially natamycin, to the roots of a strawberry plant prior to planting said plant and/or to the medium to which the plant is to be planted. [CONT.]
1 c	Process to improve crop yield	US Patents Fulltext						The present invention relates to a process to improve the yield of strawberry crops, the process comprising the steps of applying a polyene antifungal agent, especially natamycin, to the roots of a strawberry plant prior to planting said plant and/or to the medium to which the plant is to be planted. [CONT.]
2 a	Novel all-trans polyene amphoteric macrolide and process for purifying natamycin	Chemical Abstracts	WO 2020035562	A1	Alive	20201203	ROYAL DSM NV	The present invention is directed to a process for purifying natamycin, to an all-trans polyene amphoteric macrolide, to a compn. comprising said polyene amphoteric macrolide and to a process for prep. said polyene amphoteric macrolide. [CONT.]
			CH 112543761	A	Alive	20210408		Source: US2021230207
			EP 3837270	A1	Alive	20210524		The present invention is directed to a process for purifying natamycin, to an all-trans polyene amphoteric macrolide, to a composition comprising said polyene amphoteric macrolide and to a process for preparing said polyene amphoteric macrolide.
2 b	NOVEL ALL-TRANS POLYENE AMPHOTERIC MACROLIDE	PatBase	US 20210230207	A1	Alive	20210805	ROYAL DSM NV	

- The Selection View previews which information will be displayed in each integrated row in your exported report.
- Green check marks show which cells have been selected by the database ranking and column rules to appear in the exported report. (See page 8.)

- 2. Click the Preview button in the upper right of the window to see how your report will appear when exported.



- 3. Use File | Export to export your Reference Rows report to Word, Excel, etc. (See page 11.)

Title	Database	Probable Assignee	Inventor(s)	Patent Family Patent	Kind	Date	Abstract
1 Modulating expression of a target nucleic acid comprises providing to the cell a guide RNA including a transcriptional activator or repressor domain as a fusion protein, and providing to the cell a nuclease null Cas9 protein	1a PatBase link 1b FAM link 1c GGP link 1d GGP link 1e GGP link 1f GGP link 1g GGP link 1h Immoz link 1i Immoz link	PRESIDENT AND FELLOWS OF HARVARD COLLEGE	CHERICH DZHORDZH M CHURCH GEORGE M ESVELT KEVIN M GEORGE M CHURCH KEVIN M ESVELT KEVIN M IWANICKI MALI PRASHANT G PRASHANT G MALI	US 8267135 US 20140356999 US 10640789 US 20160237466 US 10767194 US 20200024618 US 20140356996 US 20200299732	B2 A1 B2 A1 B2 A1 A1 A1	2016-02-23 2014-12-12 2020-05-05 2016-08-16 2020-09-08 2021-01-23 2014-12-04 2020-09-24	(US8267135) Methods of modulating expression of a target nucleic acid in a cell are provided including introducing into the cell a first foreign nucleic acid encoding one or more RNA complementary to DNA, wherein the DNA includes the target nucleic acid, introducing into the cell a second foreign nucleic acid encoding a nuclease-null Cas9 protein that binds to the DNA and is guided by the one or [CONT.]
2 Altering a target nucleic acid in a cell by introducing into the cell a first foreign nucleic acid encoding guide RNA sequences complementary to DNA, and introducing into the cell a second foreign nucleic acid encoding a Cas9 protein	2a PatBase link 2b FAM link 2c GGP link 2d GGP link 2e GGP link 2f GGP link 2g GGP link 2h GGP link 2i GGP link 2j GGP link 2k Immoz link	PRESIDENT AND FELLOWS OF HARVARD COLLEGE	BYRNE SUSAN M CHURCH GEORGE M GEORGE M CHURCH SUSAN M BYRNE	EP 3071698 EP 3071698 EP 3071698 EP 3804543 WO 201577290 WO 201577290 US 10767054 US 20150140564 JP 2016537982 JP 2020062033 DK 3071698T	B1 A2 A4 A1 A2 A3 B2 A1 A A T3	2014-08-04 2016-09-28 2017-06-28 2020-02-05 2015-06-28 2015-08-08 2020-09-29 2015-05-21 2016-12-08 2020-04-23 2019-11-18	(EP3071698) Methods of simultaneously existing large nucleic acid sequences from a target nucleic acid and inserting large foreign nucleic sequences into the target nucleic acid sequence using DNA binding protein nucleases are described.

Review the rest of the Mini Guide to learn more about using BizInt Smart Charts to create, customize, and distribute your integrated IP report.

Reviewing your report — charts, records and images

Charts (tables) in BizInt Smart Charts combine the functionality of a spreadsheet and a table. Each database record is represented by a row in the chart. A column represents a field (or elements of a field) from each record.

BizInt Smart Charts supports columns containing images and “subtables” – tables within cells, such as Patent Family.

All of the records and fields imported to create the report are contained in the chart file, and can be displayed or hidden at any time.

PatBase: patbase_mousetrap_ock07

	Title	Patent Assignee	Patent	Kind	Date	Abstract	Image
1	Mousetrap	RECHT BENCKISER NV RECHT BENCKISER AU PTY LTD	US 2005162237 US 7311738 AU 200520789	RR RR AA	2006-08-24 2007-06-19 2006-09-01	Source: US2005162237A1 With reference to a preferred embodiment an improved rat trap is the present invention provides a mousetrap comprising a first part (1) and a second part (10) that together define an enclosure wherein the first part (1) and the second part (10) are repeatedly connected to a first latching means (90). [CONC]	
2	Safety disposable mouse			A A2 A1	2006-03-30 2007-07-07 2006-04-06 2006-05-14	Source: US2006040222A1 This product is designed to provide a disposable spring-loaded mouse trap with a safety arm to prevent accidental discharge of the bow of a spring-loaded mouse trap. The safety disposable mouse trap consists of a lower score attachment safety arm and other conventional spring-loaded mouse trap elements. [CONC]	
3	TESTING A PIPELINE IN AIR	KOHINOL PHILIPS ELECTRONICS NV VINI KAM KEEB WELAGE PAUL	WO 00006152 SP 1196428 CN 19891291	A1 A1 A	2006-01-19 2001-03-02 2007-06-13	Source: WO000000152A1 An architecture for testing a pipeline (14) in an integrated circuit comprises an input part and an output part to operate to process a data sent having a property of data rate. The architecture comprises a multiplexer (16) provided at each input of the data rate of the pipeline (14) each multiplexer being operable to receive a data rate of test data to be input to the pipeline [CONC]	

Choose Columns

Available Columns

- Abstract (French) (empty)
- Agent (empty)
- Applicant (empty)
- Application Date
- Application Details
- Application Number
- Applications
- Applications (empty)
- Art Unit (empty)
- CA Classification (empty)
- Classifications
- CPC
- Dates (empty)
- Desc. Drawings (empty)
- Designated States
- Doc. Type
- Doc. Type
- Document Number
- D.O.I. (empty)
- ECLA Class (empty)
- Entry Date
- Examiner (empty)

Selected Columns

- Title
- Common Family
- Database
- Patent Family
- Patent Family Status
- Claims
- Patent Assignee
- Possible Assignee
- Inventor(s)
- Abstract

☒ Show empty columns: (32 columns) 10 columns selected (of 82 in chart)

Apply Cancel Help

Changing visible columns

To select and rearrange columns, select **View | Choose Columns**. On the left side, you will see all the available columns for your chart, and on the right, the currently visible columns. Add columns you wish to display to the “Selected Columns” panel at right. Drag the column name or use the Up/Down buttons to rearrange the order of the columns.

Viewing records

To view the record associated with a row, double-click on the row number button, or select the row and **View | Records**. You can use the arrow buttons or drop-down menu to move between records. Close the Record Viewer or select **View | Chart** to return to the chart.

For some sources you can view the related record on the publisher website by selecting **View | Record on Publisher Website**.

Hit highlights (from supported PatBase, STN, and Orbit formats) are now shown in the records.

Viewing images

Follow the same basic steps to view associated images, e.g., select **View | Publisher Images** or double-click on the image in the chart. Images will automatically scale to fit the window and you can use the drop down menu to zoom the image.

You can paste an image into a cell from the Windows clipboard, including from structure-drawing tools.

Records: A Better Mousetrap (2005-...)

High voltage electronic rat eradication equipment.

2: High voltage electronic rat eradication equipment.

3: Animal e.g. mouse, trap for use in e.g. house, has safety arm attached

4: Mouse trap for home use and agricultural animal husbandry, has strik-

5: Rat or mouse trap comprises box whose entry is blocked by swiveling

6: Mouse trap has mechanism main body having alignment sections of a

7: Animal e.g. mouse, trap, has ball being support mechanism balancing

Derwent Class: P14 U24 V04 X25

Inventor: HUANG, Z, YAN, Y
Patent Assignee: SHANGHAI XIANGMING HIGH SCHOOL

Country Count: 1

Patent	Kind	Date	Week	Lang	Pages	Main IPC
CN 1732774	A	200601215	200648			A01M19/00

Application Details

Patent	Kind	App. lration	Date
CN 1732774	A	CN 200410053389	20040803

Publisher Images (Zoom: 24%): A Better Mousetrap (2005-20...)

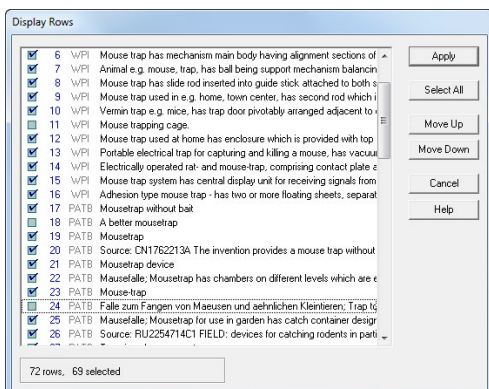
Fit 66% 100% 200% 300% 400% Fit

Customizing your report

Hiding and reordering rows

Use **View | Rows** to hide and reorder rows, and to re-display hidden rows. You can also use **Edit | Hide Row** or **Ctrl-H** as a shortcut to hide a single row or selection of rows. Hidden rows will not appear in exported or printed reports. **Edit | Move Row** lets you move rows to a specific location in the chart.

Version 5.6 introduced similar features for hiding and reordering Reference Rows using the **View | Reference Rows** and **Edit | Hide Reference Row** commands.



Adding user columns

To add your own column, select **Edit | Add Column**. A new untitled column appears on the right side of the chart. Double-click on the column title to change the title. You can change properties of columns using **View | Column Properties**.

Sorting rows

To sort the rows, select **View | Sort**. You can sort on multiple columns, in ascending or descending order. Use the check box to control row shading.

Editing text

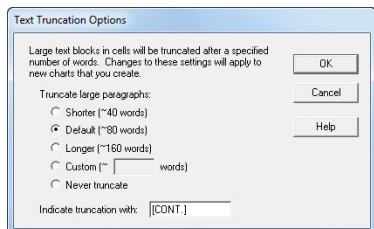
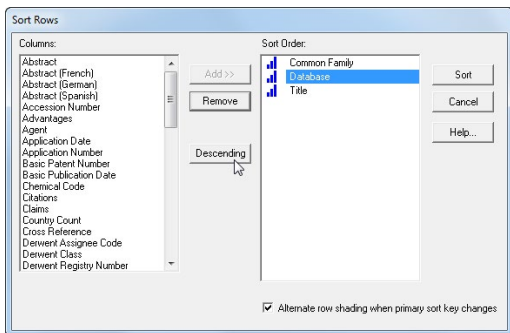
You can edit text in any cell, including subcells. You cannot apply a style (e.g. bold, italics, color) to individual words or phrases in the chart or records.

Changing text truncation

If you see [CONT.] at the end of text in a cell, this field was truncated during chart creation. You can see the full content of the field by viewing the record.

You can change the text truncation behavior (indicated by [CONT.]) using **Options | Text Truncation in cells**. Truncation settings take effect on chart creation.

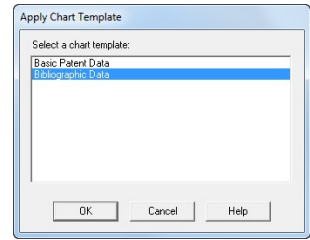
Change the truncation settings and reimport your data to see the result.



Creating and applying chart templates

You can create your own chart template by creating a chart you like, then saving this template using **File | Save as Template**. To apply a new chart template, select **View | Apply Template**. There are separate templates for each database and for combined charts.

Chart templates are not currently available in Reference Rows.



Creating simple statistics

To create a count of unique values in a column, select **Tools | Statistics** and select a column. Statistics will be automatically opened in Excel. [Learn more at: Statistics on multi-database reports](#)

In Reference Rows, statistics are calculated for Reference Rows (not individual rows) based on the selected value for the Reference Row.

	A	B
1	Derwent Class	Count
2	P14	16
3	X25	3
4	U24	1
5	V04	1

Find and replace

Use **Edit | Find...** to find instances of text in the visible columns of your chart. The cell containing the text will be selected. Use **Edit | Replace...** to find and replace text in all visible columns in your chart.

Titling your report

The initial chart title is based on the name of the file you imported. You can change the title by double-clicking on the title or using **View | Title**.

Color-Coding Cells

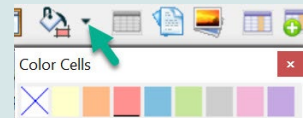
You can now color-code cells using eight pre-defined colors.

This feature replaces the yellow highlight feature in earlier versions of the software.

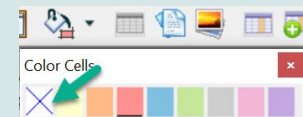
[Learn more at: Color-Coding Cells](#)

To color-code cells, select the cell (or group of cells) to color-code, then click on the down arrow next to the paint bucket icon on the toolbar to bring up the Color Cells panel and select your color. Or choose **Text | Color cell** on the menu to color the cell in the most recently selected color.

Title	US Patent Number	Patent Assignee	Inventor(s)	Ranking
Biocide formulations containing rhamnolipids and methods of use	US 20070207930 A1 US 7968499 B2	Jeneil Biotech, Inc., United States (US)	Gandhi, N R Skebba, Victoria L. Palmer	Medium
Composition for inhibiting mycolic and bacterial growth, comprises biocide component selected from at least one nisin or at least one natamycin, and carrier component containing rhamnolipid	US 20070207930 A1 US 7968499 B2	JENEIL BIOTECH INC GANDHI N R PALMER S V L	GANDHI N R PALMER S V L SKEBBA V L P PALMER SKEBBA V L	Interesting
Treatment for microbe-induced inflammatory responses in the eye using inhibitors of spleen tyrosine kinase (SYK)	US 20130274216 A1	Alcon Research, Ltd., United States (US)	Carlson, Eric C. Hellberg, Mark R. Yanni, John M.	Low
Pharmaceutical composition useful for treating ophthalmic fungal infections, preferably fungal keratitis and fungal endophthalmitis, comprises spleen tyrosine kinase inhibitor and antimicrobial compound	US 20130274216 A1	ALCON RES LTD	CARLSON E C HELLBERG M R YANNI J M	Review



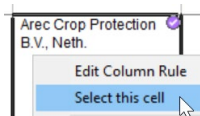
1. Selecting a cell and clicking on the Paint Bucket icon will color the cell in the currently selected color, shown in the rectangular below the paint bucket.
2. To remove the color-coding for a cell, select the cell and click on the white box with the blue "X", or choose **Text | Clear cell colors**.
3. You can choose **Text | Clear all cell colors** to remove all color-coding.



More features of Reference Rows

Select this Cell (Override the Ranking and Rules)

To select a specific value, overriding the ranking and rules, select the cell you prefer, bring up the right-click pop-up menu, and choose **Select this cell**. A purple check mark will indicate a manually selected cell. To undo the selection, select the cell again. You can also manually edit the text in cells in the Selection View.



Hide and Rearrange Reference Rows

Use the **Hide Reference Rows** command on the right-mouse menu to hide all the rows in a Reference Row. You can also hide and move Reference Rows, and make them visible again, with the new **View | Reference Rows** panel. You cannot currently hide single rows in a Reference Row.

Creating a summary subtable

Two features in BizInt Smart Charts Reference Rows let you create a subtable summarizing related records for columns you select. For example, to create the subtable below:

1. Choose **Tools | Create Subtable from Columns** and move the "Seq ID Number", "% Identity", "Length" and "Location" columns to the Selected Columns panel. Click Apply. A new "Untitled Subtable" column will be created for each row. You can rename this column but not the sub-columns.

Sequence Locations				
Seq. ID Number	% Identity	Length	Location	
US20140356959-0001	100.00	1368	probable disclosure (not found by automated parsing)	1.3
US20140356956-0001	100.00	1368	probable disclosure (not found by automated parsing)	1.4

2. Change the rule for this column to "Summarize all Values." A blue symbol will appear to indicate this rule. When the report is exported, the summary subtable (like the one above) will be created.

See the recipe "Summarizing Sequence Locations in a Patent Family" in the [Cookbook of Reports & Visualizations](#) for more details.

Reference Rows Rules Templates

Rules Templates allow you to save your database ranking and column rules so that you can quickly apply them to a new Reference Rows report.

After you have created database rankings and rules for your chart, select the menu option **Reference Rows | Save Rules Template**. Use **Reference Rows | Apply Rules Template** to apply a rules template to your chart.

Saving your Reference Rows chart

Use **File | Save** to save the Reference Rows chart as a .chrr file, so you can later re-open it in Reference Rows with all of your rules, edits, and selections saved. Use one of the export options ([see page 12](#)) to distribute your Reference Rows report.

You can also open the .chrr file in BizInt Smart Charts for Patents. The rows will be in the sorted order but no Reference Rows features will be saved.

Updating reports

Use **File | Update** to update reports and identify new and updated records and cells.

In Step 1, you select the “older” chart to be updated; in Step 2, select the chart with new information. A Row Status column appears in the updated chart. New rows are colored in green and changed cells in updated rows are highlighted in blue.

PatBase: PatBase - Mousetraps (updated Oct 07)			
	Title	Row Status	Abstract
3	FIG. 6 A SOUND. Mousetrap has drum with two open ends two heightened inner walls at open ends and adhesive layer applied on inner wall of drum	Added	Source: 062406257A1 A mouse trap includes a hollow barrel 1 having two open ends. The barrel has two raised inner walls 11 at the two open ends and an adhesive surface 2 applied on the interior wall of the barrel 1 between the two raised inner walls 11. The inner diameter of each raised inner wall 11 is smaller than the inner diameter of the adhesive surface 2. [CONT.]
4	Humane animal trap	Unchanged	Source: US2004020103AA An animal trap we do provide which has an enclosure and in which inside A pivoting member is pivotally put Which pivots down under an animal's foot. [CONT.]
5	Mousetrap; Mousetrap for use in garden has catch container designed as bottle and including pivot that is twistably supported on support p	Updated	Source: DE102004052920A1 The mousetrap has a catch container (1) designed as a bottle and having a laterally diametrical pivot (5) in its longitudinal area. The container swivels from a horizontal position to a perpendicular position under the weight of an intruded mouse such that a slip opening lies over the mouse. The pivot is twistably supported on a support plate of a support rack. [CONT.]

Distributing reports

You have many options for distributing your BizInt Smart Charts report, including exports to popular formats like Word, Excel, and HTML; BizInt Smart Charts Viewer; and printing.

BizInt Smart Charts Viewer

BizInt Smart Charts Viewer is an option for distributing reports to end-users who want customizing, annotating, and exporting capabilities beyond those provided by Word, Excel or other exports. With BizInt Smart Charts Viewer, clients can open .chp files and use all standard BizInt Smart Charts features except: importing, combining, updating, identify common patent family, and Reference Rows.

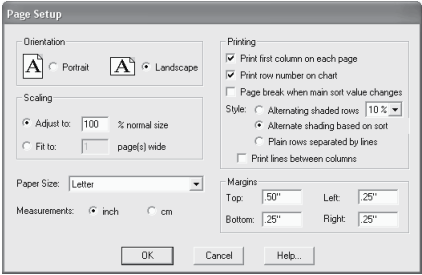


BizInt Smart Charts Viewer is offered at no charge to all BizInt Smart Charts customers. To learn more or to download the Viewer: [BizInt Smart Charts Viewer](#)

Printing reports

You can change the print settings under **File | Page Setup**. Under scaling, you can specify that the chart fits on a specified number of pages in width.

Use **File | Print** to print the chart, records, and images. You can print the current record, all records, or a range of records. Use **File | Print Preview** to preview the appearance of a printed chart.



VantagePoint - Smart Charts Edition (VP-SCE)

VantagePoint - Smart Charts Edition (VP-SCE) provides tools for data cleanup, filtering and visualization.

Use **Export | VantagePoint - Smart Charts Edition** to send visible columns from BizInt Smart Charts for Patents or Reference Rows to VP-SCE for further processing. Cleaned up and filtered data can then be returned to BizInt Smart Charts as new columns or can be used to create visualizations.

To learn more: [VantagePoint - Smart Charts Edition \(VP-SCE\)](#)



Exporting reports

To export your report, use **File | Export** and choose the appropriate Export Format.

Recommended export formats

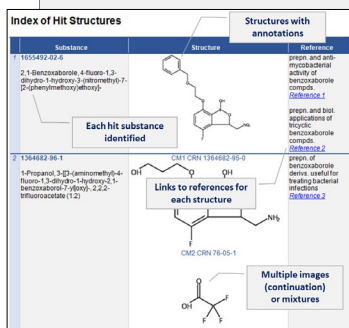
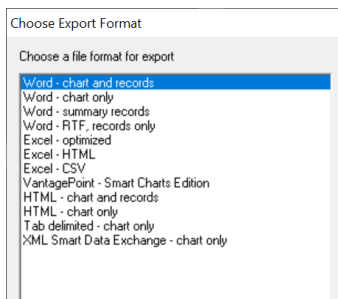
- **Word** (chart and records, chart only): creates an HTML file with the chart (and optionally the records and images) which is opened in Microsoft Word. This format is good for reports which will be distributed by email.
- **Word - Summary Records** (records only): creates an HTML file for Word with records displaying fields based on those displayed in your chart, including full claims, sequence alignments, and hit structures.

For a **Structure-oriented Index of Hit Structures**, on the **Summary Record Export Options** panel, select **Include Index of Hit Structures**.

To include **hit structures for each record**, on the **Summary Record Export Options** panel, select **Include Hit Structures**.

Learn more: [Working With Hit Structures](http://bizint.com/tips/WorkingWithHitStructures) at bizint.com/tips

- **Excel - optimized** (chart only): creates an HTML file which preserves most formatting while creating only one row in Excel for each BizInt Smart Charts row. You can also export in .CSV format.
- **HTML** (chart and records, chart only): creates an HTML file which can be viewed in a browser.



Export options

You can specify the appearance of your exported report using the **Export Options** panel.

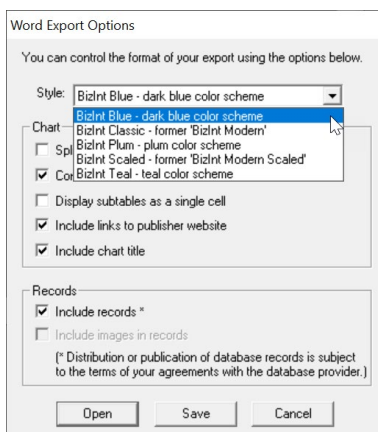
Under "Style", you can select a stylesheet, for both Smart Charts and Reference Rows exports.

Under "Chart" is an option to include a link to the full record on the publisher website; "Link" will appear under the row number in Word and HTML exports.

Under "Records" you can choose to include the records (which will be linked to the record title) and images in the records.

Learn more at: [Exporting reports with images](http://bizint.com/tips/ExportingReportsWithImages), including how to embed images in your exported Word report before distributing it to colleagues.

Choose **Open** to open your file directly, or **Save** to save the export before opening it.



Exporting your Reference Rows report



Select the Export icon on the toolbar or use **File | Export** to view and distribute your Reference Rows reports via one of the supported formats (HTML, Word, Excel, XML Smart Data Exchange Format, and VantagePoint XML.)

Each set of related records is shown as a single row, with the selected (checked) cells displayed for each Reference Row. You can control the display of database attributions (including not displaying them) using **Reference Rows | Show cell sources**.

Export Options in Reference Rows:

- **HTML/Word exports:** You can choose to include links to records in both the Database and first column. Links to records on the publisher website are displayed as “*link*” in the Database column (see right).
- **Excel exports:** Style sheets are now available for Excel exports. You can choose to display the links to records on the publisher website in separate columns. Excel can only display one link in a cell, so multiple links in subtables will always be for the first link. You can choose to not display the chart title.

PYRAZOLO[3,4-B]PYRIDINE COMPOUNDS, AND THEIR USE AS PDE4 INHIBITORS (1b EP)	1a	CA	link
	1b	EP	

Creating links to full patents and other publications

When exporting to HTML, Word, and Excel):

1. For each desired column in your chart, check the appropriate link option under **View | Column Properties**. This choice will be saved in a chart template.
2. **Full text patents:** Under **Options | Full-text patent links** select which patent host you wish to use for each supported authority. Some hosts (e.g. PatentOrder) require you to configure the links using the Configure button.
3. **DOI numbers:** use DOI.org to resolve links, or use **Options | DOI links...** to enter the base URL for your own link resolver.
4. **NCT numbers:** go to the record on ClinicalTrials.gov.

Column Properties

Title: Patent Number

Width: 120

Sort type: Alphabetic

☒ Link patent numbers to full text in HTML export

☐ Convert DOI to links in HTML export

☐ Link NCT numbers to clinicaltrials.gov in HTML exp

OK Cancel Help

Patent Full-text Link Options

Choose how patent numbers from the following authorities should be converted to full-text links in HTML exports.

Authority	Link to:		Configure
<input checked="" type="checkbox"/> US	USPTO		Configure
<input checked="" type="checkbox"/> EP	esp@cenet		Configure
<input checked="" type="checkbox"/> WO	PatentSCOPE		Configure
<input checked="" type="checkbox"/> FR.GB	esp@cenet		Configure
<input type="checkbox"/> CN	esp@cenet		Configure

OK Cancel Help



Software for
Business Intelligence

BizInt Smart Charts

BizInt Solutions, Inc.

1.714.289.1000

www.bizint.com

For more info: www.bizint.com/tips

QUESTIONS OR SUGGESTIONS?

Please contact us at:

✉ support@bizint.com

☎ 1.714.289.1000 (8 am - 5 pm Pacific Time)

🌐 www.bizint.com

We are always pleased to hear from you
and will do our best to address your issues.