



Filtering the Patent Family by Authorities

In this example, we've used VantagePoint - BizInt Smart Charts Edition to filter the Patent Family subtable to include only the authorities supported for full text links in BizInt Smart Charts for Patents -- US, EP, WO, FR, and GB.

Subtable filtered by patent authorities



| | Title | Database | Patent Family | | | Patent Family: BizInt | | |
|--------------|--|---------------------------|------------------|------|------------|-----------------------|------|------------|
| | | | Patent | Kind | Date | Patent | Kind | Date |
| 14 | Mouse trap used at home has enclosure which is provided with top and base having aperture and indentation that can be aligned to open enclosure for entry of mouse, such that contra-rotation of top relative to base is enabled to trap mouse | Thomson Innovation + DWPI | WO 2005051079 | A1 | 2005-06-09 | EP 1691603 | A1 | |
| | | | AR 46358 | A1 | | US 20070017149 | A1 | |
| | | | AU 2004292376 | A1 | | US 20090288332 | A1 | |
| | | | BR 200416076 | A | | US 7506471 | B2 | |
| | | | EP 1691603 | A1 | | WO 2005051079 | A1 | 2005-06-09 |
| | | | GB 200325446 | D0 | | | | |
| | | | KR 2006110287 | A | | | | |
| | | | US 20070017149 | A1 | | | | |
| | | | US 20090288332 | A1 | | | | |
| | | | US 7506471 | B2 | | | | |
| ZA 200603453 | A | | | | | | | |
| 15 | MOUSETRAP | TotalPatent | WO 2005051079 | A1 | 2005-06-09 | EP 1691603 | A1 | |
| | | | AU 2004292376 | A1 | | GB 0325446 | D0 | |
| | | | BR PI04160762 | A1 | | GB 325446 | D0 | |
| | | | BR PI0416076 | A | | US 20070017149 | A1 | |
| | | | EP 1691603 | A1 | | US 20090288332 | A1 | |
| | | | GB 0325446 | D0 | | US 7506471 | B2 | |
| | | | GB 325446 | D0 | | WO 2005051079 | A1 | 2005-06-09 |
| | | | KR 1020060110287 | A | | | | |
| | | | KR 20060110287 | A | | | | |
| | | | US 20070017149 | A1 | | | | |
| | | | US 20090288332 | A1 | | | | |
| | | | US 7506471 | B2 | | | | |
| | | | ZA 200603453 | A | | | | |
| 16 | Mousetrap | PatBase | GB 200325446 | A0 | 2003-12-03 | EP 1691603 | A1 | 2006-08-23 |
| | | | AU 2004292376 | AA | 2005-06-09 | GB 200325446 | A0 | 2003-12-03 |
| | | | WO 05051079 | A1 | 2005-06-09 | US 2007017149 | A | 2007-01-25 |
| | | | EP 1691603 | A1 | 2006-08-23 | WO 05051079 | A1 | 2005-06-09 |
| | | | KR 2006110287 | A | 2006-10-24 | | | |
| | | | BR 200416076 | A | 2007-01-02 | | | |
| | | | US 2007017149 | A | 2007-01-25 | | | |
| 17 | MOUSETRAP | FAMPAT | GB 200325446 | D0 | 20031203 | EP 1691603 | A1 | 20060823 |
| | | | WO 200551079 | A1 | 20050609 | GB 200325446 | D0 | 20031203 |
| | | | AU 2004292376 | A1 | 20050609 | US 20070017149 | A1 | 20070125 |
| | | | EP 1691603 | A1 | 20060823 | US 20090288332 | A1 | 20091126 |
| | | | KR 20060110287 | A | 20061024 | US 7506471 | B2 | 20090324 |
| | | | BR 200416076 | A | 20070102 | WO 200551079 | A1 | 20050609 |
| | | | US 20070017149 | A1 | 20070125 | | | |
| | | | IN 2006CN01914 | A | 20070608 | | | |
| | | | ZA 200603453 | A | 20070725 | | | |
| | | | US 7506471 | B2 | 20090324 | | | |
| | | | US 20090288332 | A1 | 20091126 | | | |

Filtered Patent Family - How did we create this?

Searches:

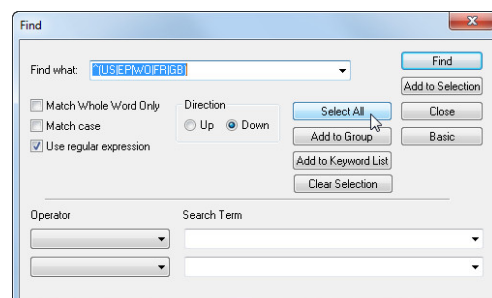
- “Mousetraps 2005-2007 - WPI (STN), MicroPatent, PatBase, FAMPAT (Orbit), Innovation (191 records).

BizInt Smart Charts for Patents

1. Import your results into BizInt Smart Charts to create a .chp file.
2. Use the File | Combine feature to create a single combined chart. Run the Identify Common Patent Family name tool and sort by the Common Patent Family field. Display the “Patent Family” column.
3. Use File | Export to export the chart as “Vantage Point - XML” (creates a .vpxi file.)

VantagePoint - BizInt Smart Charts Edition: Filter the subtable by the desired patent authorities

4. If the file not does launch automatically in VantagePoint - BizInt Smart Charts Edition (VP-SCE), then import the .vpxi file into VP-SCE using File | Import.
5. On the Summary panel, double-click on “Patent Family”.
6. Select Edit | Find to bring up the Find panel. Click the “Clear Selection” button to clear any existing selections.
7. In the Find panel, check the “Use regular expression” box. Type the regular expression `^(US|EP|WO|FR|GB)` into the “Find what:” box and click the “Select All” button. All of the US, EP, WO, FR, and GB patent numbers should be selected in the Patent Family window.
8. Click the “Add to Group” button and type “BizInt” in the group field. A new column with check marks next to the selected subrows will be created. Click “Close” to close the Find panel.
9. Select Fields | Create Field from Group Items. Select the “BizInt” item under Patent Family, and click OK.
10. Export back to BizInt Smart Charts using File | Export Fielded Records...” In the Export Wizard, select “All Records” and click the Next button. Include the “Patent Family: BizInt” and recordID fields.
11. In the next panel, select “BizInt Smart Charts for Patents” in the Output Type dropdown list, click the “Launch Application” radio button, and then click Finish.



BizInt Smart Charts for Patents

12. When BizInt Smart Charts for Patents comes to the foreground, select the original chart. It will redisplay with a new “Patent Family: BizInt” column with only the selected patent authorities.